

**MINUTES OF THE ANNUAL PARISH MEETING OF SAVERNAKE PARISH COUNCIL 21<sup>ST</sup> MAY 2025**  
**MEETING HELD AT SAVERNAKE PARK FARM, CADLEY, SN8 4NE**

**PRESENT**

Guy Singleton (Chairman) (GS)	Councillor
Nigel Eayrs (NE)	Councillor
Martin Phipps (MP)	Councillor
Nikki Boutal (NB)	Councillor
Andrew Smithson (AS)	Councillor
Suzie Singleton (SS)	Parishioner & Minute Taker

Approximately 20 parishioners

ITEM		
<b>1</b>	<b>WELCOME</b>  GS welcomed everyone to the meeting and introduced the other Councillors and Mark Jankovitch.	
<b>2</b>	<b>APOLOGIES</b>  None	
<b>3</b>	<b>APPROVAL OF MINUTES</b>  The minutes of the previous Annual Parish Meeting held on 22 <sup>nd</sup> May 2024 were approved. A copy will be uploaded to the SPC website.	
<b>4</b>	<b>UPDATE ON PARISH COUNCIL ACTIVITIES</b>  GS gave an overview of the works carried out by the Parish Council since the last Annual Meeting in 2024.  A copy is attached to these Minutes at Appendix A.	
<b>5</b>	<b>FINANCE REPORT</b>  NE went over the Parish Council's income and expenditure over the last 12 months.  A summary of this is attached to these minutes at Appendix B.	
<b>6</b>	<b>PRESENTATION ABOUT SAVERNAKE PARK COMMUNITY FARM BY MARK JANKOVITCH</b>  Mark Jankovitch gave a very interesting presentation on the work that has already been achieved at Savernake Park Community Farm – with the fruit trees having been planted last year - and the future plans for the Farm.	

ITEM		
	A summary of this is attached to these minutes at Appendix C.	
<b>7</b>	<p><b>MATTERS ARISING</b></p> <p>Two parishioners asked to address the meeting. They explained that they had recently been served a Section 21 Notice to leave the house they had been renting for many years, initially from the Crown Estate and now from the Ramsbury Estate. They asked if anyone had any suggestions as to how they could deal with this matter as their lives were based in this area and they did not want to leave.</p> <p>If anyone can be of assistance the Parish Council can put you in touch with them.</p>	

Signed .....

Date .....

Name .....

## **Appendix A**

### Savernake Parish Council APM – 21<sup>st</sup> May 2025

I would like to start by welcoming you all to our Annual Parish Meeting.

This year Mark Jankovitch kindly offered to host the meeting here at Savernake Park Farm. Mark will be giving a presentation later on what his plans are for the property

It is very poignant being here today, following the recent death of Guy Sainsbury on 2 May, in this building which I designed for Guy's dairy parlour. I am sure you would all like to pass on our condolences to Jane and his family.

As I think you are aware, this meeting is different to the Parish Council Meetings and is a meeting that is a legal requirement for each Parish to hold and is less formal than the 4 quarterly Parish Council Meetings which are held each year.

As you may know I am Guy Singleton and I am the Chair of Savernake Parish Council, my four fellow Parish Councillors are:

- Nikki Boutal
- Nigel Eayrs
- Martin Philips
- Andrew Smithson

At this meeting I customarily give a brief breakdown of Parish Council activities over the past year.

It has been quite a quiet year but one of our main focuses is still trying to improve road safety and ideally reduce the speed limits at Forest Hill and Cadley – at present it does not seem possible to reduce the limits as Wiltshire Council will not agree to this.

With support from the Ramsbury Estate and Ridgeway Sprayers, we should be getting White Gates with Sign boards installed at the Wootton Rivers end of Clench Common and name boards installed at the Marlborough end in the next few weeks, this should help to inform motorists that they are entering a residential area – unfortunately at present there is little chance of getting a speed limit put in place.

We have also been liaising with the Maurice Way residents, the Hospital and Wiltshire Council to get some additional double yellow lines installed on the section of Maurice Way adjacent to the Hospital Car Park, to prevent parked cars restricting access to Maurice Way. We are also trying to persuade the Hospital Authorities to improve the parking provision at the Hospital, and to consider ways to reduce the parking pressure by for instance placing the Mammogram Unit in Marlborough rather than at the Hospital.

Since the last APM we have responded to 10 planning applications during the year.

Wiltshire Police send us a quarterly report of crimes and incidents within the Savernake Area, copies of which are on the Parish Council Website. Since the last APM there have been 4 reported crimes within the Savernake Parish area. There were more within the Marlborough town area but they specifically respond to our request for information on our own parish.

The Neighbourhood Policing team have also been holding regular Community Engagement Events at various locations such as the Waitrose café, St John's school and the Recreation Ground. These events are advertised on Wiltshire Police's social media pages, and on our website.



# Savernake Parish Council

## Appendix B

### Savernake Parish Council - Finance

#### 1. 2024-25 Precept Income & Expenditure

♦ Precept from Wiltshire Council + Bank interest	+	£ 1,364
♦ Expenditure during the year	-	<u>£ 826</u>
♦ Balance added to reserves	+	£ 538

- ♦ The Precept received from Wiltshire Council was again unchanged at £1,300
- ♦ Expenditure included regular recurring costs (insurance, website, administration etc)
- ♦ It included no project expenditure in this financial year

#### 2. Bank Balances

♦ Reserves at the start of the year (01 April 2024)	+	£ 5,241
♦ Added to reserves	+	<u>£ 538</u>
♦ Reserve funds at 31 March 2025	+	£ 5,779

#### 3. 2025/2026 Forecast

♦ Precept from Wiltshire Council + Bank interest	+	£ 1,364
♦ Recurring expenses	-	£ 900
♦ Project expenditure (Road Safety)	-	<u>£1,000</u>
♦ Funds drawn from reserves	-	£ 560
♦ All reserves at the start of the year (1 April 2025)	+	£ 5,779
♦ Deduct the deficit arising from the year's expenditure	-	<u>£ 560</u>
♦ Forecast reserve funds at 31 March 2026	+	£ 5,219

#### 4. Summary

- ♦ The Precept continues to fully cover the Council's recurring expenses
- ♦ The Council plans to use some reserve funds for further road safety measures
- ♦ Reserves continue broadly in line with historic levels
- ♦ The Council is confident of its 2025-26 Budget and foresees no risk of being unable to fulfil its financial commitments.

# Savernake Park Community Farm & Harmony Centre for Learning

## A Vision of Regenerative Farming, Community and Learning



### Welcome to Savernake Park Community Farm...

The Savernake Park Community Farm is a transformative project situated in the heart of Wiltshire.

Spanning 50 acres, **Savernake Park Community Farm** and **The Harmony Centre for Learning** aims to realise a vision that bridges local food production, community well-being, and education inspired by HM The King's 'principles of harmony'.

Savernake Park Farm seeks to restore harmony, nurture mental and physical health, and serve the community through a sustainable, socially-driven food system.

---

### Savernake Park Community Farm: Partnering corporates directly with growers

The **Savernake Park Community Farm** is dedicated to nutritious, low-carbon local food production and community involvement, designed with multiple benefits that address some of today's most pressing issues.

#### 1. Market Garden Collaboration

Located on a vibrant 13-acre within Savernake's 50-acre landscape, the market garden area is set to produce around 200 tons of fresh vegetables annually. Each acre is carefully cultivated to yield an estimated 20 tons, creating a reliable, sustainable source of local produce. This model enables the community to directly supply businesses, increasing access to high-quality, locally grown food.

Corporate partners have the chance to involve their teams directly, curating their plots with the expertise of their executive chefs and their dedicated market gardener.

#### 2. Social Inclusion and Mental Health Support

Savernake Park Farm is committed to a model of community-led farming, integrating community and mental health support directly into operations. The market garden offers therapeutic, nature-based activities for individuals facing mental health challenges and disabilities, fostering social inclusion and personal well-being. Volunteers from all walks of life are welcomed, allowing participants to benefit from the healing power of nature, social connection, and purpose.

### 3. Education and Economic Empowerment

The Farm will offer skills learning and job creation, supported by the [Harmony Centre for Learning](#). Students of all ages, will be taught regenerative farming, sustainable food production and catering skills.

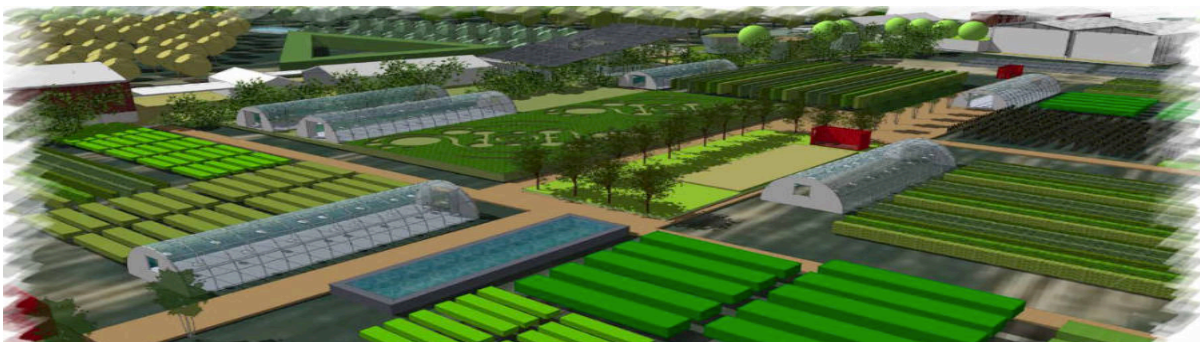
### 4. Collaboration with Charities and Community Programs

The ten corporate partners will have a unique opportunity to collaborate, build their ESG principles and create something very special and unique to them. It does this through offering an opportunity to rent land within Savernake Park Farm's market garden, to produce the very freshest and highest quality ingredients for those partners' businesses and beyond.

Partnering with organisations such as Burnt Chef and The Felix Project, Savernake Park Farm provides an inclusive space for chefs and other professionals to pass on their experience, share skills, de-stress, and help others find purpose. It enables them to tell the story behind their ingredients and provenance and gives them a strong return on investment whilst empowering them to 'lead the way' and make a real difference.

And if there are produce surpluses, these will be directed to the chosen charities of the corporations renting each acre, creating a ripple effect of positive impact in the local and extended community, further supporting ESG policies.

### **Market Garden Vision and Investment Model**

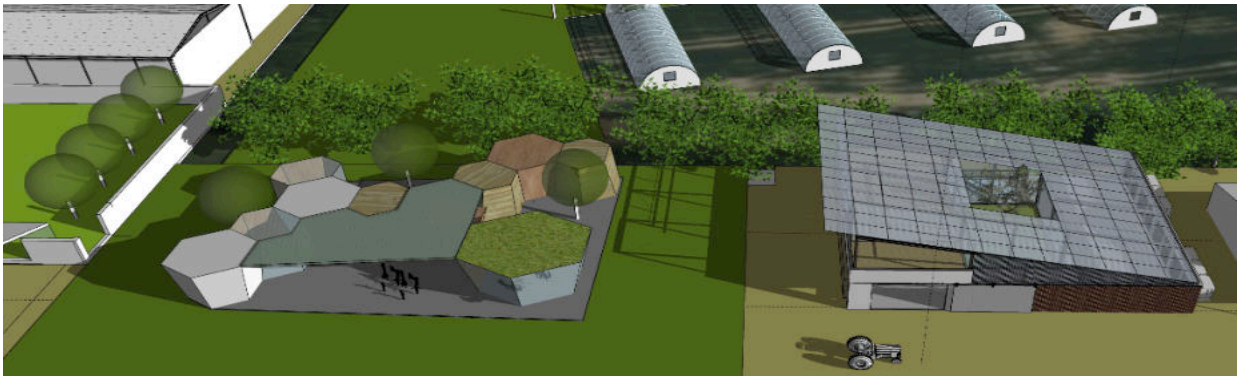


- **Cost Structure:** Each acre is available for an investment of £65,000 per annum. This includes the salary of a dedicated market gardener (£35,000) and all production costs, including distribution to a central London location.

- **Estimated Yield:** With each acre producing approximately 20 tons of vegetables annually, worth an estimated £120,000, corporate sponsors have an opportunity for both tangible return on investment and ESG alignment through Scope 3 emissions reduction.
- **Set-Up Costs and Corporate Engagement:** Initial setup costs of £100,000 cover polytunnels, necessary farming equipment, and infrastructure. Corporate sponsors also benefit from team building away days and additional community-based programs, all while supporting local food sourcing and promoting environmental, social, and governance (ESG) values.

---

### Introducing The Harmony Centre for Learning: Teaching HM The King's Principles of Living in Harmony



At the heart of Savernake Park Farm lies The Harmony Centre for Learning, a space to teach systems thinking and the interconnectedness of everything. The Centre will offer courses that promote holistic understanding across multiple areas including:

1. **Good Food and the Principle of Health**  
Focused on nutritious, locally grown food, this program teaches seasonal eating and the sensory benefits of fresh produce. Led by expert chefs and market gardeners, participants will experience the journey from farm to table.
2. **The Circular Economy and the Principle of the Cycle**  
Exploring concepts like circularity and waste reduction, students will engage in projects such as heritage fruit orchards, seed nurseries, and fruit processing (juices and jams). This module underscores sustainability by teaching the complete lifecycle of food.
3. **Biological Farming and the Principle of Interdependence**  
The Centre's hands-on farming workshops cover organic practices, livestock care, soil health, manures, and ecosystem management. Led by livestock farmers, this module fosters an appreciation for how our natural systems all connect to each other.



#### 4. **Wildflowers and the Principle of Diversity**

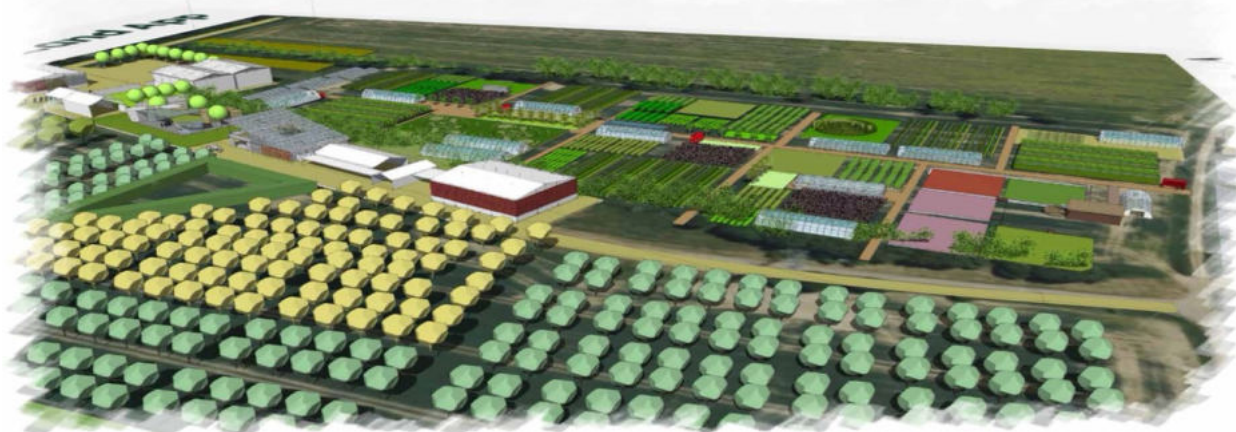
In this module, participants will learn the art and science of wildflower cultivation and floral design, gaining insights into the importance of biodiversity and ecological balance.

#### 5. **Local Traditions and the Principle of Adaptation**

Guided by artisans and foraging experts, students will practice traditional skills such as basket weaving, hemp processing, and coppicing, creating a link to heritage crafts and sustainable material.

#### 6. **Community Well-being and the Principle of Oneness**

Rooted in wellness, this module offers experiences in meditation, green therapy, and yoga. Programs are tailored for all ages and abilities, including SEND (Special Educational Needs and Disabilities) support, creating a space for healing, mindfulness, and community cohesion.



### **Join Us in Building a New Legacy of Sustainability and Community Well-being**

Savernake Park Community Farm is a groundbreaking project, one that promises to become a model for sustainable land management, community health, and regenerative agriculture across the UK.

With the support of corporate partners renting market garden plots, this initiative will demonstrate what is possible when social purpose meets sustainable practice.

**Let's build an extraordinary future together at Savernake Park – a living legacy for future generations and a foundation of hope and harmony for our world.**

